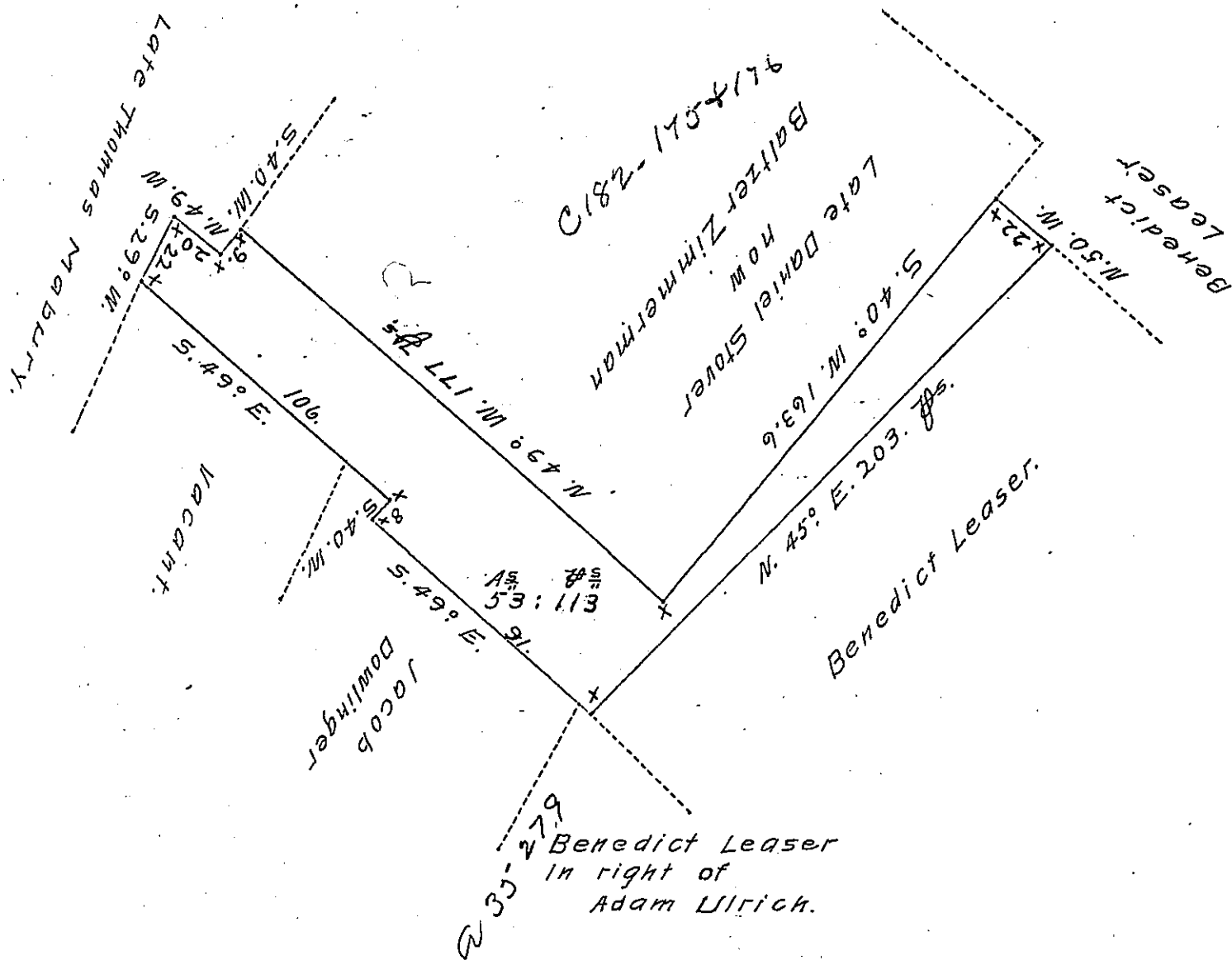


FORM NO 1.



Draught of a Tract of Land Situate in Hereford Township Berks County, Surveyed by James Scull decd, late Deputy Surveyor of Berks County, unto Baltzer Zimmerman, in pursuance of a Warrant dated the 27th day February A. D. 1759. Containing 53 Acres 113 Perches and Allowance of Six $\frac{1}{2}$ Per Ct for Roads &c.

The above Draught is taken from the General Draught of the said James Scull decd.

Joseph Hoch D.S.

*To Samuel Cochran Esquire
Surveyor General of Pennsylvania*

Reading January 20th 1801.

IN TESTIMONY that the above is a copy of the original remaining on file in the Department of Internal Affairs of Pennsylvania, made conformably to an Act of Assembly approved the 16th day of February, 1833, I have hereunto set my Hand and caused the Seal of said Department to be affixed at Harrisburg, this 10th day of Oct. 1907

Henry Hoch
Secretary of Internal Affairs.